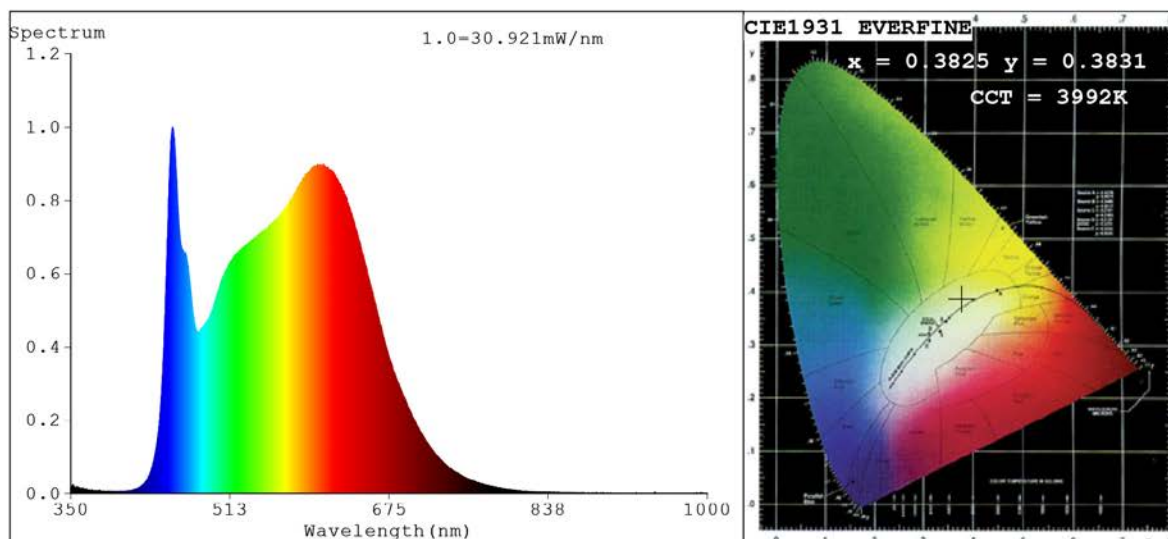


Spectrum Test Report



Color Parameters:

Chromaticity Coordinate: $x=0.3825$ $y=0.3831$ $u'=0.2239$ $v'=0.5047$
 $CCT=3992K$ ($Duv=0.0024$) Dominant WL: $\lambda_d = 577.9nm$ Purity=29.8%
 Ratio: R=19.6% G=75.7% B=4.7%; Peak WL: $\lambda_p = 454.0nm$ FWHM=28.1nm
 Render Index: $R_a=91.6$ CRI=88.4 TM30: $R_f=87$ $R_g=95$
 R1 =93 R2 =98 R3 =97 R4 =89 R5 =91 R6 =96 R7 =89
 R8 =80 R9 =54 R10=95 R11=91 R12=71 R13=95 R14=99 R15=88

Photo Parameters:

Flux = 1667 lm Eff. : 112.58 lm/W $\Phi_e = 5.484 W$

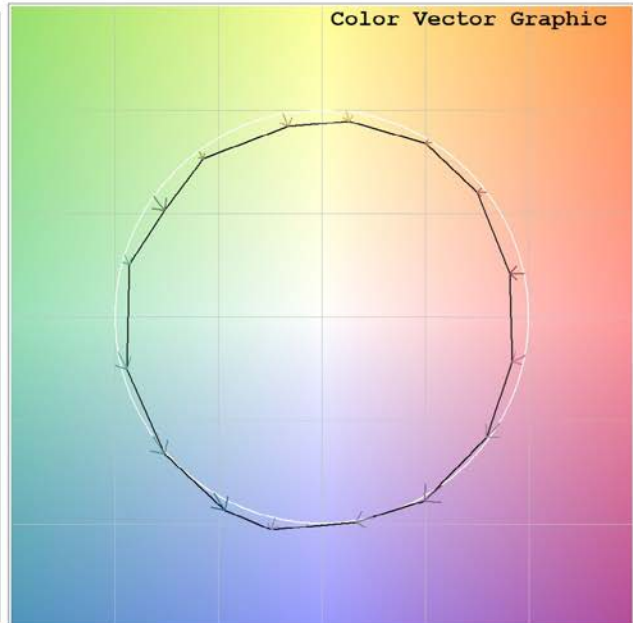
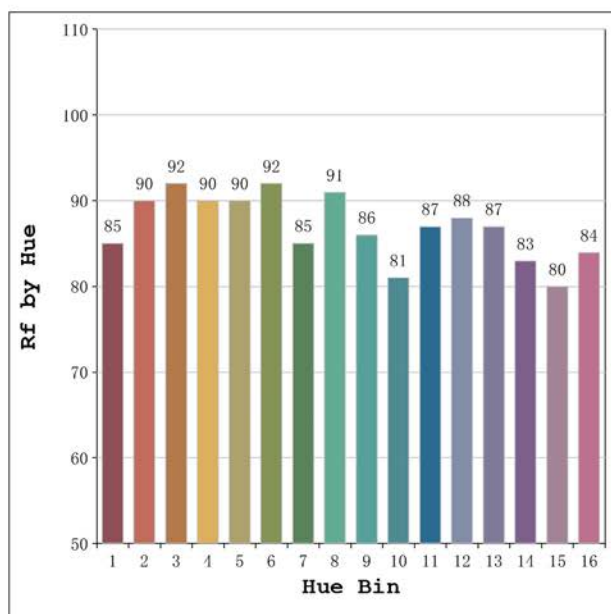
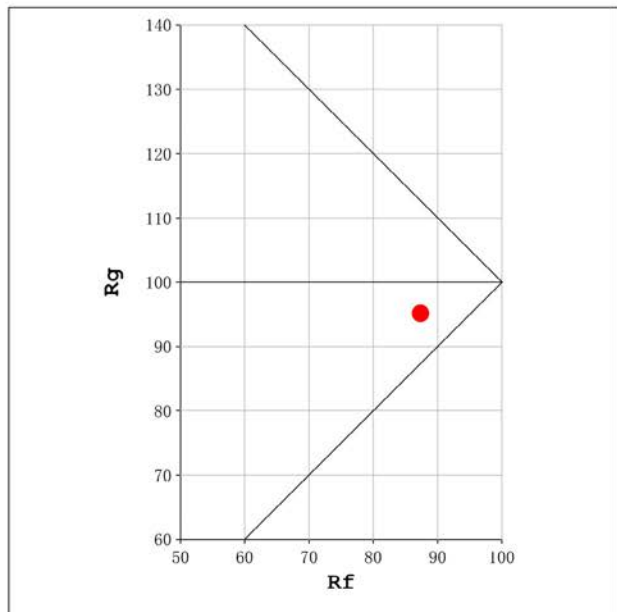
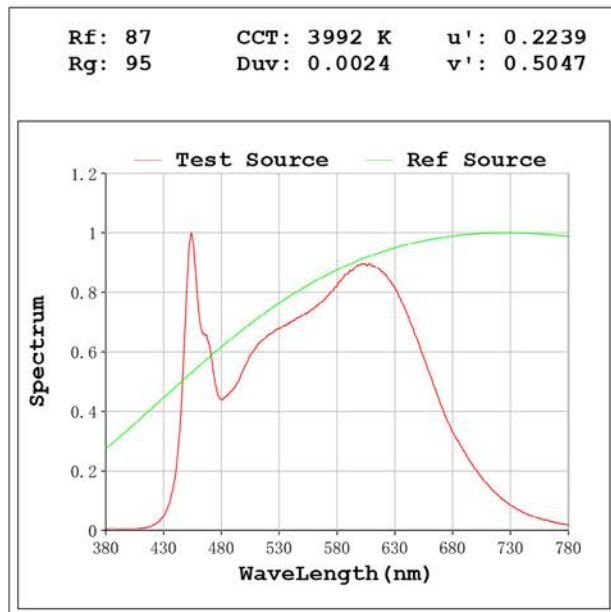
Electrical parameters:

V = 23.998 V I = 0.6170 A P = 14.81 W PF = 1.000

Status: Integral T = 1007 ms $I_p = 51044$ (78%)

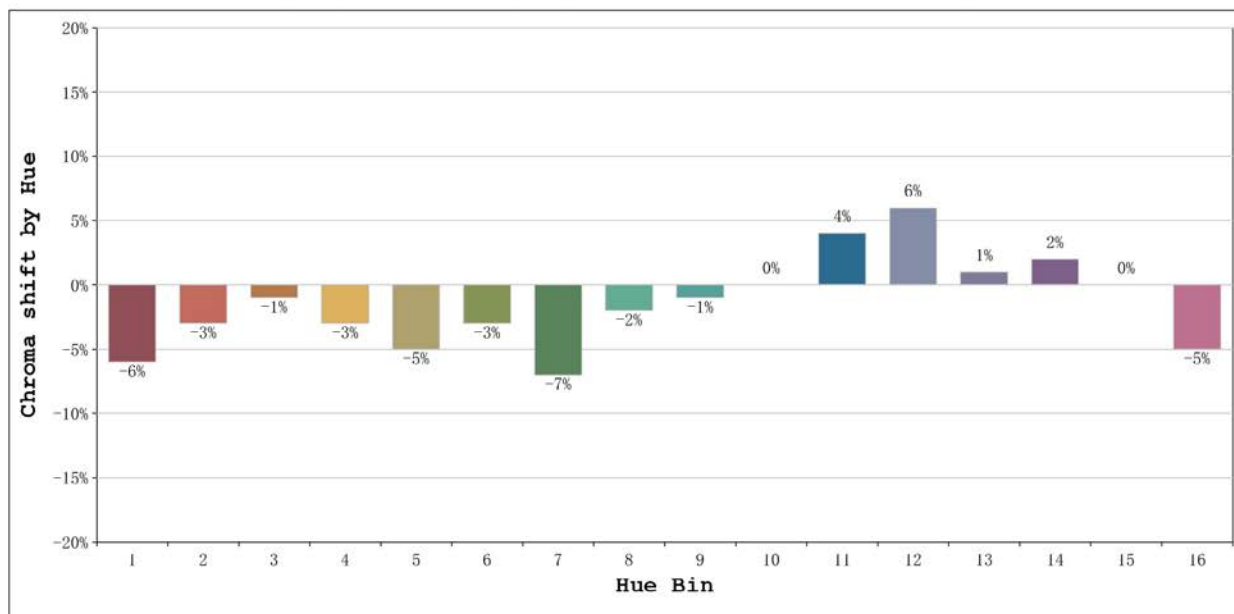
Model: Ecoled COB ip67 4000k
 Tester: Sergio Carneros
 Temperature: 25Deg
 Manufacturer: Luz Negra S.L

Number: 31.105
 Date: 2025-01-21 13:32:23
 Humidity: 57%
 Remarks: 100cm de tira flexible



Model:Ecoled COB ip67 4000k
 Tester:Sergio Carneros
 Temperature:25Deg
 Manufacturer:Luz Negra S.L

Number: 31.105
 Date:2025-01-21 13:32:23
 Humidity:57%
 Remarks:100cm de tira flexible



			Graphic shift(%)	
Hue Bin	Hue Angle	Rf	Chroma	Hue
1	0.0° - 22.5°	85	-6	2
2	22.5° - 45.0°	90	-3	2
3	45.0° - 67.5°	92	-1	2
4	67.5° - 90.0°	90	-3	-1
5	90.0° - 112.5°	90	-5	0
6	112.5° - 135.0°	92	-3	0
7	135.0° - 157.5°	85	-7	2
8	157.5° - 180.0°	91	-2	4
9	180.0° - 202.5°	86	-1	8
10	202.5° - 225.0°	81	0	10
11	225.0° - 247.5°	87	4	9
12	247.5° - 270.0°	88	6	0
13	270.0° - 292.5°	87	1	-8
14	292.5° - 315.0°	83	2	-10
15	315.0° - 337.5°	80	0	-8
16	337.5° - 360.0°	84	-5	-3

Model:Ecoled COB ip67 4000k
 Tester:Sergio Carneros
 Temperature:25Deg
 Manufacturer:Luz Negra S.L

Number: 31.105
 Date:2025-01-21 13:32:23
 Humidity:57%
 Remarks:100cm de tira flexible